

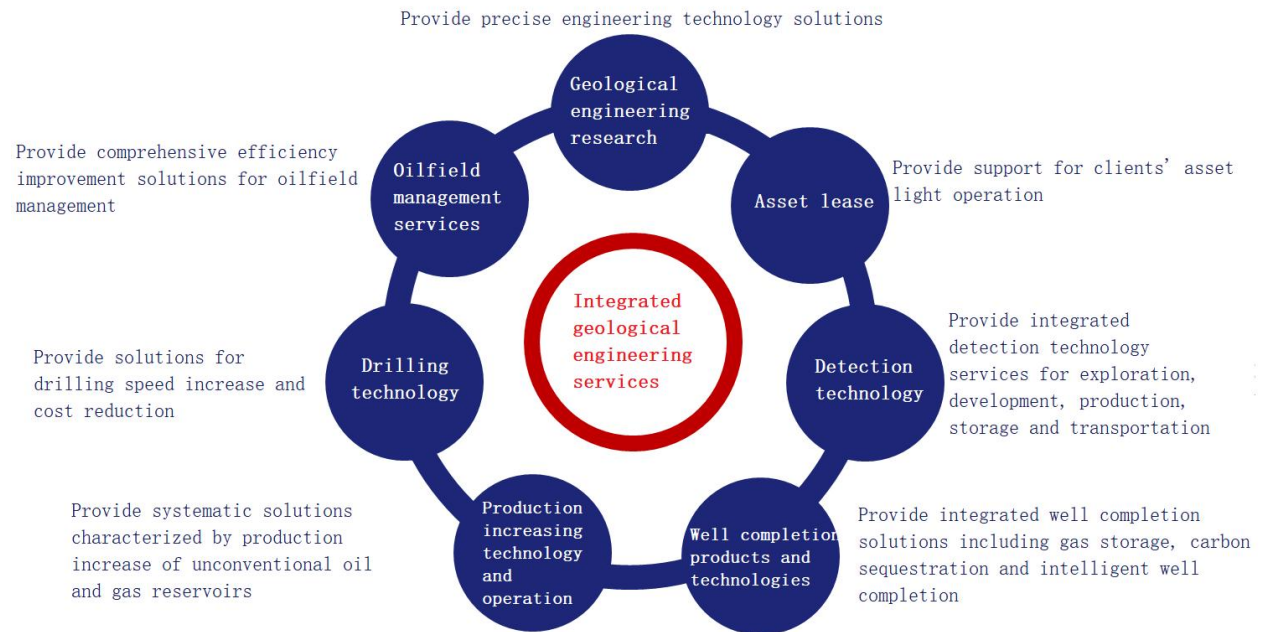
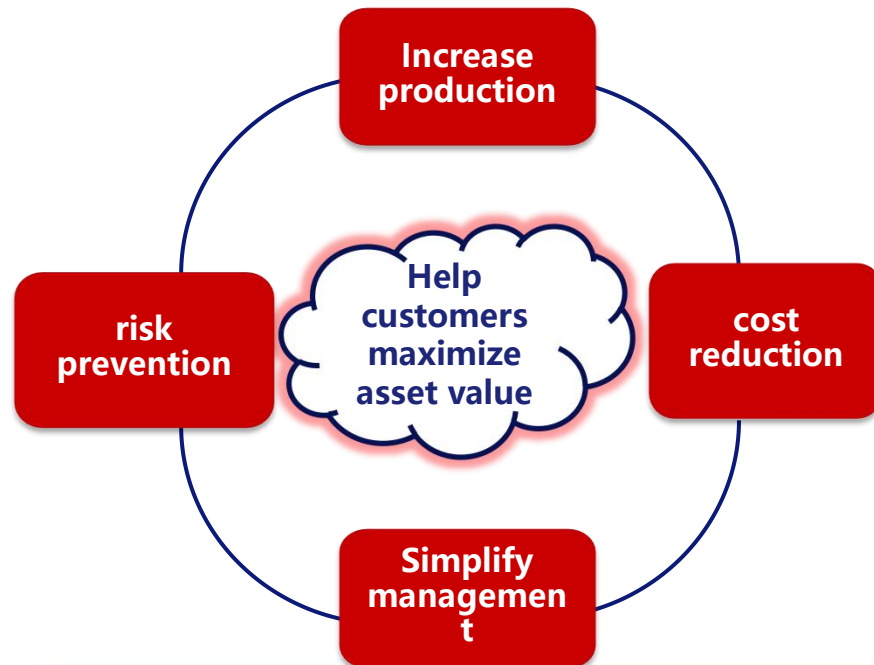


# Geological Engineering Integration Service

- Anton provides global customers with integrated geological engineering general contracting services for different types of single wells and blocks. It is characterized by the combination of geological engineering, integrated application of advanced design concepts, new processes and new technologies, and has mature project management experience and rapid resource integration capabilities to provide customers with efficient and high-quality project delivery.
- General contracting service of geological engineering integration project
- Geological engineering integrated production risk general contracting service



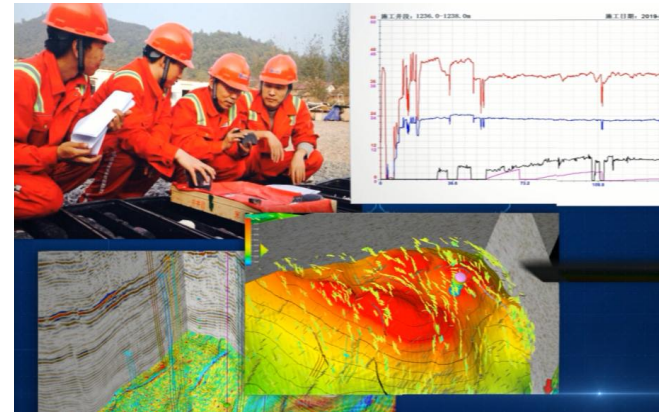
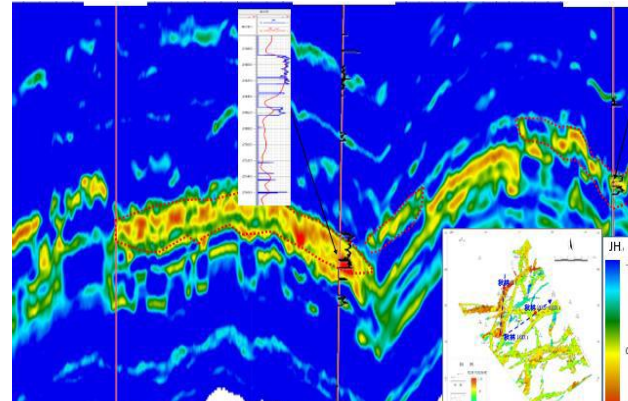
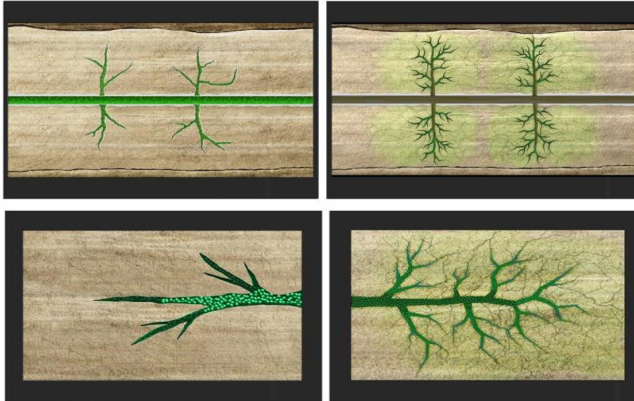
- Anton adopts the characteristic method of combining geological engineering to propose a series of solutions for customers' needs. Its services cover the whole process of geological research, well location and scheme optimization, drilling construction, well completion fracturing, and gas production test. It can realize turnkey projects, greatly improve the efficiency of project development, and maximize the value of customers' reservoir assets.





- We have a large number of experts and software in geology, drilling, stimulation and other aspects, a perfect project management system and rich project management experience; It has established good cooperation relations with major oil companies and oil service companies at home and abroad, and has strong resource integration capabilities and new technology service capabilities.





- 3D Seismic Data Fine Processing and Reservoir Prediction Technology
- 3D geological fine modeling and horizontal well optimization deployment technology
- Drilling and Completion Technology of Shale Gas/Tight Gas/Coalbed Methane
- Drilling and completion technology of ultra long horizontal well/branch well/U-shaped well
- Full scale fracturing stimulation technology for unconventional oil and gas reservoirs
- Fracturing technology of complex fracture pattern in unconventional oil and gas reservoirs



■ Since 2009, we have carried out geological engineering integrated general contracting services, involving drilling and pressure test engineering/risk/technical service general contracting of coalbed methane, shale gas, tight gas, etc. We provide diversified geological engineering services according to customer needs, and have rich construction experience and strong resource integration capability.

- General contract of risk technology for well location optimization and integration of drilling and pressure testing in Ji XXX-H1, North Jiangsu Basin (2014)
- General contract of risk technology for well location optimization and WOB integration of JingXXX Well in Jingmen Block (2015)
- CBM well location deployment and geological engineering integration risk general contracting in Liupanshuiniuchang block, Guizhou (2017)
- Geo-engineering integration technical plan for the development stage of Ning XX well area (2018)
- Changning HXX-5 Well Ultra-Long Horizontal Section Shale Gas Well Geological Engineering Integration Technical Service Risk General Contract (2019)
- Shengli Oilfield Yix Block Sandy Conglomerate Reservoir Geological Engineering Integration Research Technical Service Project (2020)
- Integrated productivity plan of geology and engineering for low-permeability oil reservoirs in the upper part of Es4 in the Che X block of Shengli Oilfield (2020)
- Daniu above-ground paleogas reservoir geology-engineering integrated risk general contract (2022)

# ANTON 安東

## 东方智慧，全球分享！



安东官方公众号



石油同学公众号

帮助别人成功... ..