

Multi-layer Water Injection / Production Technology

This technology is a combination of three techniques cable testing and adjusting (T&A) & multi-layer water injection technology, AICD multi-layer inflow control technology and quantum tracer continuous monitoring technology. According to reservoir physical characteristics, this technology can achieve intelligent water injection, water control and production and accurate & continuous monitoring of the post-frac reservoir physical properties. Anton can provide comprehensive technical services such as process, tools and tracer according to well condition and clients' production plan.

Technical Features

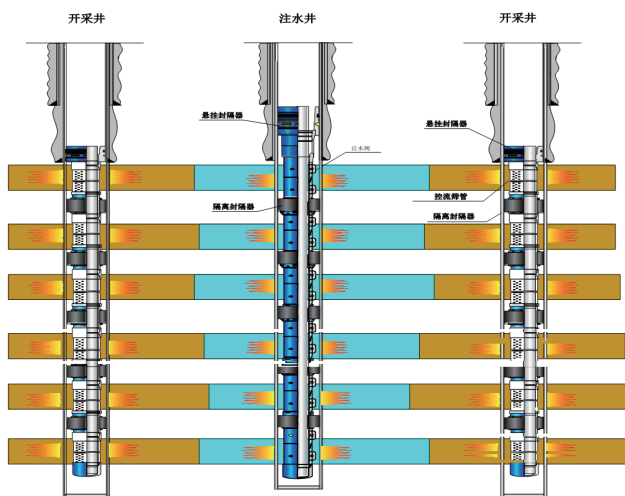
- Intelligent multi-zone water injection technology can equalize the effect of each layer and eliminate interlayer interference.
- AICD multi-zone inflow control technology can equalize the production from each layer and improve productivity from low permeable layer.
- Quantum tracer continuous monitoring technology offers accurate injection and production control, Increase the utilization of the whole block.

Range of Application:

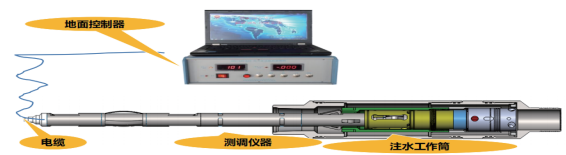
- Strong heterogeneity in plane and longitudinal, great difference between layers
- Water flooding and water coning caused by uneven water injection
- Suitable for vertical or directional wells cementing and perforating completion

Service Capacity:

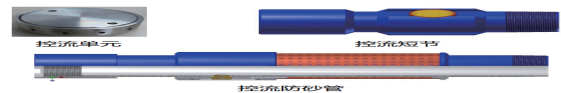
- Specialized intelligent multi-zone water injection and production tool system and service
- Professional tracer technology products and services
- Professional designing team providing customized services



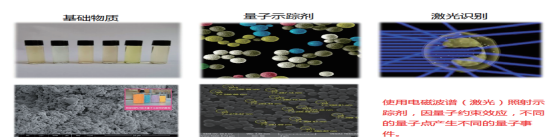
Mult-zone water injection and production system



Cable (T&A) system & multi-zone water injection tool



AICD multi-zone flow control tool



Quantum tracer continuous monitoring technology